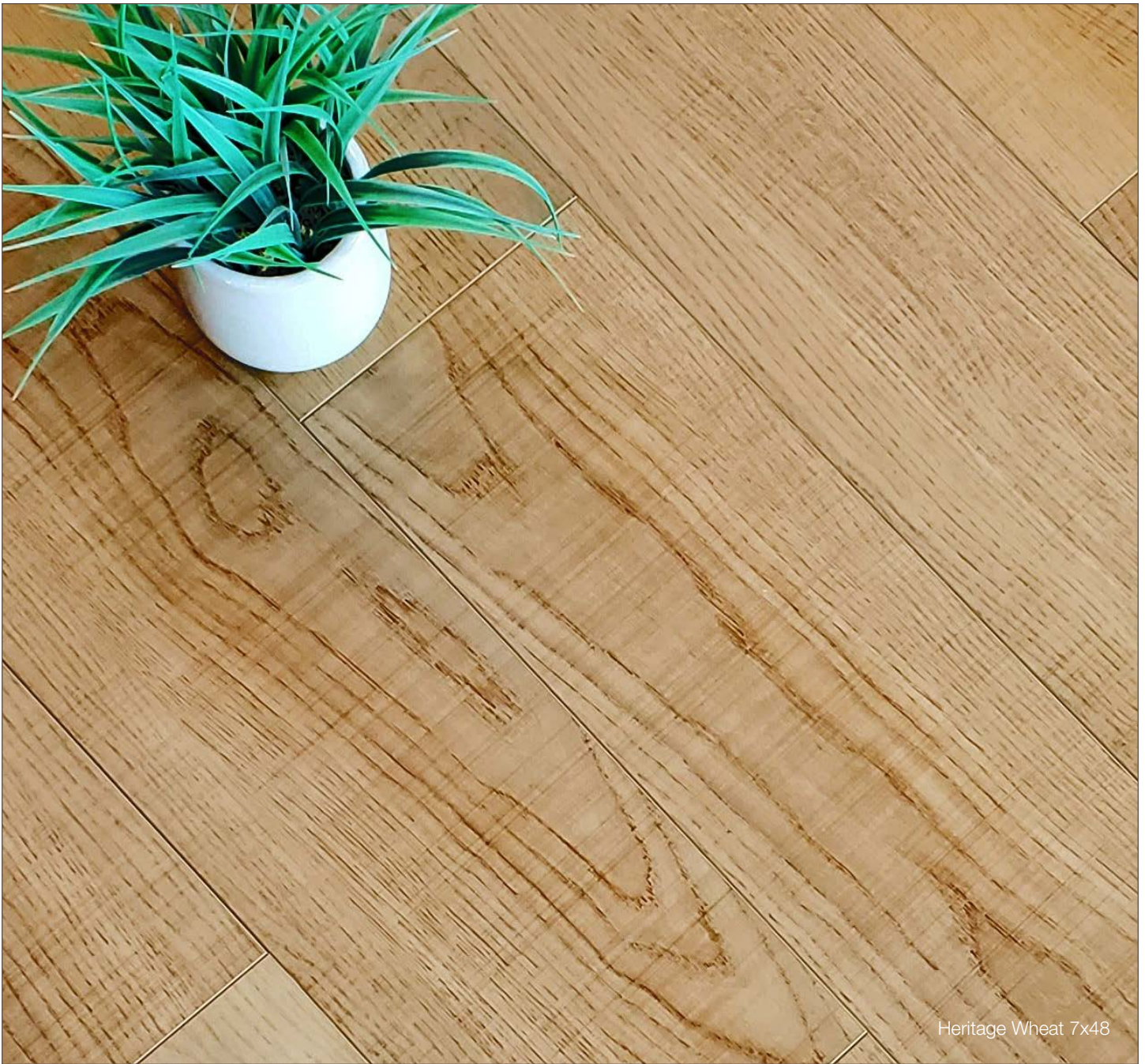


Mosaic Luxury Vinyl

INSTALLATION INSTRUCTIONS



Heritage Wheat 7x48

GLUE DOWN CONSTRUCTION

- Character, Forward, Parker Planks, Parker Tiles -

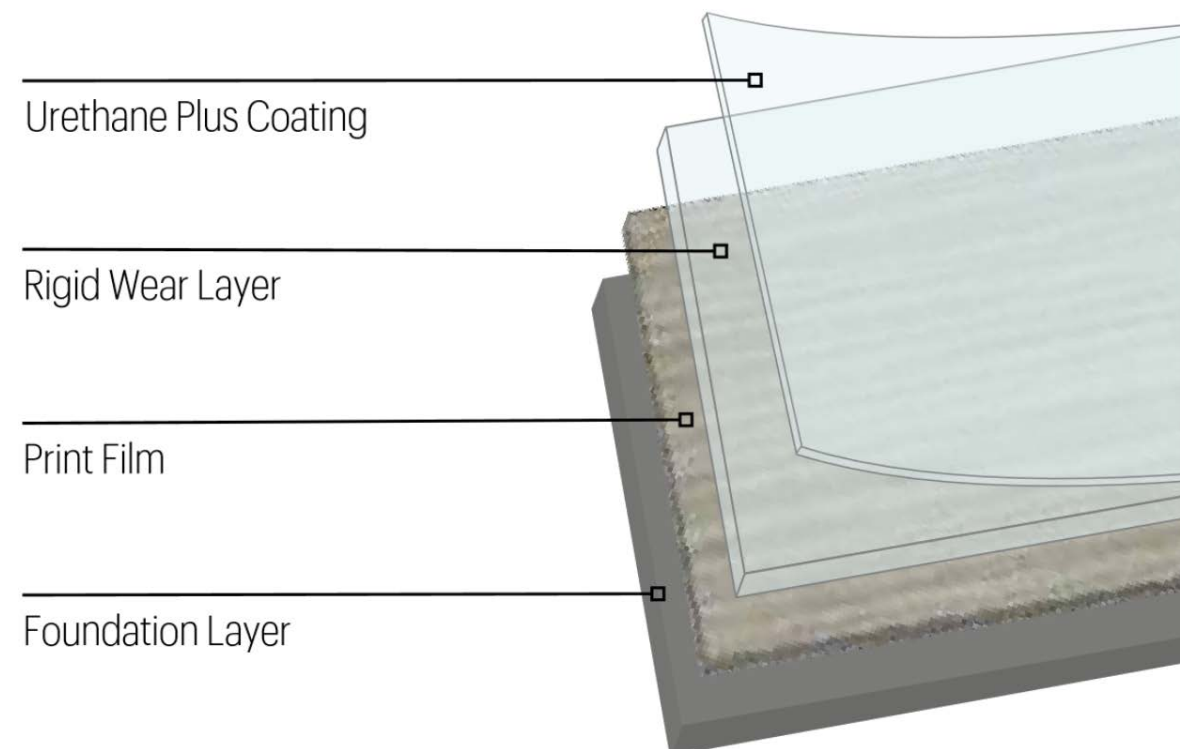
**2mm and 2.5mm Total Thickness
6 mil, 12 mil, and 20 mil Wear Layers**

Adhesive	Trowel	Set-In-Wet	Dry-to-Touch	Comments
S-295	1/32" deep; 1/16" wide; 1/32" apart U-notch	N/A	Dry to Touch	Foot Traffic: 24 Hours Heavy Rolling Loads: 72 Hours
S-319	Short nap paintroller	N/A	Dry to Touch	Foot Traffic: Immediately Heavy Rolling Loads: Immediately
Flip Spray	N/A	N/A	Dry to Touch Approximately 30 minutes (tacky to touch with no transfer to fingers)	Foot Traffic: Immediately Heavy Rolling Loads: 24 Hours
S-1000*	1/32" deep; 1/16" wide; 1/32" apart U-notch	Set in Wet; Approximately 10-20 minutes	N/A	Foot Traffic: Immediately Heavy Rolling Loads: 8 Hours



Glue Down Adhesive

Flexera® Premium High Track and Universal Adhesives are solvent free, high strength adhesives formulated for the installation of dimensionally stable LVT and vinyl planks without attached backing. Both adhesives may be used interchangeably.



GLUE DOWN INSTALLATION

THANK YOU FOR CHOOSING MOSAIC LUXURY VINYL FLOORING

If properly installed and cared for, your new flooring will be easy to maintain and will look great for years to come. These directions are based on industry standards and best practices. Failure to follow these installation instructions may result in damage to the flooring and void the floor's warranty.

WARNING: FOR EXISTING IN-PLACE RESILIENT FLOOR COVERING AND ASPHALTIC ADHESIVES, DO NOT SAND, DRY SWEEP, DRY SCRAPE, DRILL, SAW, BEADBLAST, OR MECHANICALLY CHIP OR PULVERIZE EXISTING RESILIENT FLOORING, BACKING, LINING FELT, ASPHALTIC "CUTBACK" ADHESIVE, OR OTHER ADHESIVE.

These existing in-place products may contain asbestos fibers and/or crystalline silica. Avoid creating dust. Inhalation of such dust is a cancer and respiratory tract hazard. Smoking by individuals exposed to asbestos fibers greatly increases the risk of serious bodily harm. Unless positively certain that the existing in-place product is a non-asbestos-containing material, you must presume it contains asbestos. Regulations may require that the material be tested to determine asbestos content and may govern removal and disposal of material. Visit rfci.com to see the current edition of the Resilient Floor Covering Institute (RFCI) publication Recommended Work Practices for Removal of Resilient Floor Coverings for instructions on removing all resilient floor covering structures or contact your retailer. Mosaic Luxury Vinyl floor coverings do NOT contain asbestos.

Installation:

Location: All grade levels

Fitting: All methods

Tools Required for Installation

Tape measure, chalk line, utility knife, pencil, straight edge, vacuum or broom, optional tile cutter or cutting shear, subfloor prep supplies, and adhesives.

Keys to Successful Glue Down Installation

- Most installations need an approximate 10% cutting allowance added to the square footage of the room.
- Proper conditioning of the job site is necessary. Planks should not be exposed to sudden temperature changes.
- Store, transport, and handle planks in a manner to prevent any distortions. Distortions will not disappear over time. Store cartons flat, never on edge. Ensure that the planks are lying flat during installation.
- Installations of carpet, metal strips and other transition moldings should not pinch the flooring against the subfloor and should allow for some slight movement wherever practical.
- Protect floor from heavy-rolling loads, other trades, and movement of appliances by using sheets of plywood or similar.

Suitable Substrates

All substrates listed below must be properly prepared and meet certain requirements. There may be other exceptions and special conditions (as noted below) for these substrates to be suitable for the glue down installation system.

- Concrete – dry and smooth on all grade levels.

GLUE DOWN INSTALLATION

- Tiles can be installed over a painted concrete floor.
- Suspended wood subfloors with approved wood underlayments – must have minimum of 18" well-ventilated crawl space underneath including:
- Properly prepared OSB
- Lauan Plywood: Use only Type 1 lauan exterior grade "BB" or "CC" for underlayment. The use of lesser grades of lauan plywood is unacceptable and may cause severe problems when used as an underlayment, including discoloration, indentation, loss of bond and delamination.

IMPORTANT: The use of lauan plywood and other extremely porous wood underlayments will reduce the flash and working time of adhesives. It is best to apply an acrylic-based primer-sealer to any porous substrate prior to installing sheet vinyl. A manufacturer's certification of lauan grade must accompany any claim involving the use of a lauan underlayment.

- Single-layer, fully-adhered, existing resilient floors – must not be foam-backed or cushion-backed
- Ceramic tile, Terrazzo, Marble
- Polymeric Poured (seamless) Floors

DO NOT INSTALL OVER

- Existing resilient tile floors that are below grade
- Existing cushion-backed vinyl flooring
- Carpet
- Hardwood flooring installed directly over concrete
- Existing floating floors
- Particleboard 40lb. density or waferboard

Job Conditions/Preparations

- Resilient flooring should only be installed in temperature-controlled environments. It is necessary to maintain a constant temperature before, during and after the installation. Therefore, the permanent or temporary HVAC system must be in operation before the installation of resilient flooring. Portable heaters are not recommended as they may not heat the room and subfloor sufficiently. Kerosene heaters should never be used.
- All substrates must be structurally sound, dry, clean, flat, and smooth with minimal deflection. Substrates must be free from excessive moisture or alkali. Remove dirt, paint, varnish, wax, oils, solvents and other foreign matter, and contaminants.
- Subfloors must be flat within 3/16" in 10' or 1/8" in 6'.
- For concrete substrates, moisture testing should be conducted and moisture vapor emissions. Acceptable levels are determined by the adhesive being used. Check adhesive label for limitations.
- High spots on the substrate should be leveled and low areas filled with appropriate underlayments.
- Do not use products containing petroleum, solvents, or citrus oils to prepare substrates as they can cause staining and expansion of the new flooring.
- For renovation or remodel work, remove any existing adhesive residue so that 100% of the overall area of the original substrate is exposed.

GLUE DOWN INSTALLATION

- Ceramic tile floors, ceramic and marble grout joints, and irregularities in concrete should be filled and leveled using a cementitious patch to fill and smooth any embossing in the old floor.
- The area to receive resilient flooring materials and adhesives should be maintained at a minimum 65°F for 48 hours before, during, and 48 hours after installation. Maintain minimum temperatures of 55°F thereafter.
- Radiant heated substrates must not exceed a maximum surface temperature of 85°F.
- The subfloor panels must have a smooth, sanded face and show no swelling of edges or surface due to exposure to weather conditions or construction traffic.
- There are numerous products available for use as floor fills, patches, self-leveling underlayments, and trowelable underlayments. They include proprietary blends of compounds such as Portland cement, calcium aluminates, and gypsum-based products. These are recommended by their manufacturers for smoothing rough or uneven subfloors, enhancing acoustical and fire characteristics of structures or as substrates to receive floor covering for otherwise unsuitable subfloor conditions. If the subfloor surface appears to be dusty then apply a primer to the surface.

Safety and Clean Up

Wet adhesive should be cleaned up immediately with soap and water on a clean cloth. Dried adhesive may require the use of a solvent-based adhesive cleaner.

Installation Preparation

Remove baseboard, quarter-round moldings, wall base, appliances, and furniture from room. After preparation work, sweep and vacuum the entire work area to remove all dust and debris. Whenever possible, plan the layout so that the joints in the planks do not fall on top of joints or seams in the existing substrate. The end joints of the planks should be staggered a minimum of 6" apart. Do not install over expansion joints.

Determine which direction the plank will run. Find the center of each of the end walls (the walls perpendicular to the long dimension of the planks) and place a pencil mark on the floor. Connect these points by striking a chalk line down the center of the room. Do a dry layout of planks from the center line to the wall running parallel to the long direction of the planks to determine the width of the last row of planks (Figure 1).

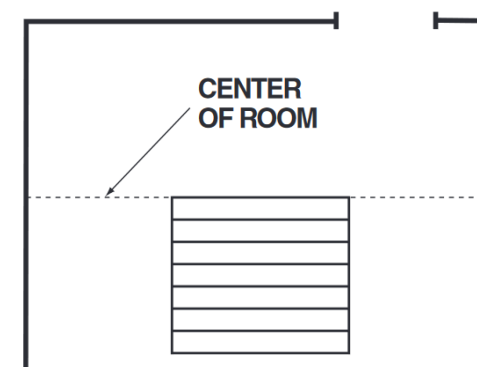


Figure 1. Dry layout to determine width of border plank

Avoid having border pieces less than half with width of the planks. If you find the border planks will be less than 1/2 the width of the plank, the center starting line should be shifted a distance equal to 1/2 the plank width. This will "balance" the room and provide for a larger cut piece at the wall.

NOTE: The subfloor must be thoroughly free from dust and debris. If the subfloor is dusty this may affect the product performance.

NOTE: Stagger end joints by 6". Cut pieces at the ends of rows should be 8" long or longer.

Precautions for All Installation Methods

- When moving appliances or heavy furniture, lay a plywood panel on the floor and "walk" the item across it. This protects the floor from scuffing and tears.
- Use floor protectors on furniture to reduce indentation. The heavier the item, the wider the floor protector needed.

CLICK INSTALLATION

- Amazon, Daroca, Docks, Foster, Heritage, Mott, Valley Planks -
- Carrara, Cement, Chenille, Nord, Traverina Tiles -

IMPORTANT: Read these instructions before starting your project. It is imperative that the job-site environment and the subfloor meet the requirements noted in this guide. Additionally, if proper method of installation is not followed, the click system will not engage correctly resulting in damage to the click system itself, and subsequently planks that will buckle, separate, or lift from one another.

Photos of a correct installation that follow the instructions below:



Photos of incorrectly installed material:



Recommended Use

Mosaic Luxury Vinyl Flooring can be installed on all grade levels that are temperature controlled. This product is recommended for residential and light to medium commercial interior use only. Mosaic Luxury Vinyl Flooring should not be installed in areas where a motorized wheelchair is being utilized. Product must be inspected prior to installation. Installation of any damaged or defective planks constitutes acceptance and Warranty claims will not be accepted after flooring has been installed.

Jobsite Conditions

All areas of installation should contain functioning HVAC equipment. Radical fluctuations in temperature can result in extreme expansion and contraction of the flooring. It is not necessary to acclimate Mosaic Luxury Vinyl unless the material has been stored at temperatures below 40°F or above 100°F within 12 hours of the installation. If material has been stored at these temperatures, product should be acclimated in the room where the installation will occur for 12-24 hours at a temperature between 55° and 85°.

Always stack boxes flat to avoid warping the planks. It is recommended to keep the stacks shorter than eight cartons high.

CLICK INSTALLATION

Subfloor Preparation

Substrate must be structurally sound. Subfloor must be flat within 1/8" over 6', and 3/16" over a 10' span. Variations in flatness must either be sanded down or leveled with a suitable floor self-leveling compound such as Custom's Techlevel WSF or TEC's Level Set 300.

As a floating floor, Mosaic Luxury Vinyl will bridge minor floor imperfections and gaps, but heavy roughness or unevenness in the subfloor may telegraph through the new floor covering. It is important that the subfloor is clean and free from dirt or debris. Never install Mosaic Luxury Vinyl directly over residual asphalt-type (cut back) adhesive. Residual cut back adhesive should be completely removed and covered with a high-quality latex underlayment. The installer is responsible for making sure that site conditions are appropriate prior to the installation. ****Use of a separate underlayment will hinder proper installation of the product and void warranty.****

Wood Subfloors

It is recommended all Mosaic Luxury Vinyl be installed over a minimum of 3/4" thick wood subfloors. Screw down all loose areas or replace as needed. Be sure to confirm the moisture level with a moisture meter and test in multiple areas. Results must be 12% or less on average. Anything greater should be addressed prior to installation. Never apply a vapor barrier over wood subfloors.

Concrete Subfloors

It is important for new concrete floors to cure for at least 60 days. Any high spots should be ground down to ensure a level floor. Additionally, any low spots should be filled with a leveling compound such as Custom's Techlevel WSF or TEC's Level Set 300. Test the moisture level in multiple areas. Slabs with moisture levels exceeding 8lbs per 1000sqft in 24hrs using the Moisture Vapor Emissions Rate test, or over 75% when using the Relative Humidity test, will require the addition of a 6mil polyethylene moisture barrier. When a moisture barrier is installed, note that all seams are to have an 8" overlap taped with a waterproof adhesive such as duct tape. Vapor barriers must also be installed at least 1" up the wall.

Existing Floors

Mosaic Luxury Vinyl may be installed over existing clean, flat, dry, and well adhered existing tile, vinyl, or hardwood flooring with wood subfloors. Any existing wood glued directly to concrete must be removed prior to installation. Existing sheet vinyl, VCT, LVT, ceramic tile, and terrazzo must be flat.

Radiant Heat

Mosaic Luxury Vinyl may be installed over radiant heating systems such as Schluter Ditra Heat or Suntouch provided the heating system is covered by a self-leveling mortar such as Custom's Techlevel WSF or TEC's Level Set 300. Heated floor systems must be installed and functioning for a minimum of two weeks prior to installing Mosaic Luxury Vinyl. The temperature should remain at 60°F for one week prior to installation. It may be gradually increased in daily increments of 10° to minimize any shock to the Mosaic Luxury Vinyl flooring. The surface temperature should not exceed 95°F. Note that area rugs will increase the surface temperature by 3°- 5°F degrees.

Installation Guidelines

It is recommended that a 10% overage is added for cutting and waste material. It is also recommended to keep an extra box on hand for potential future repairs. A minimum 3/8" expansion gap must be placed between the planks and walls. Areas greater than 50 feet in one direction require expansion gaps.



CLICK INSTALLATION

Always work from multiple cartons. Mix and install product from 2-3 cartons at a time in order to achieve desirable plank variation.

Always undercut wood doorjamb. Check local building code for metal door jamb. If they cannot be cut, then proper expansion must be maintained.

Use care when installing wall moldings and transition strips to not fasten through the MLV flooring.

If cabinets are to be installed on top of the flooring (including kitchen islands), area of material under cabinets must be fully adhered to the subfloor (including an additional 2' beyond the cabinetry) using a premium pressure-sensitive adhesive such as TEC's Parabond 5092.

****With Click Systems, using a glue down method or installing under cabinets will not be covered under warranty.****

Tools Required for Installation

Tape Measure, Utility Knife, Jigsaw, Tapping Block or Rubber Mallet, Pull Bar, 3/8" Spacers, T-Square, Safety Glasses, Broom or Vacuum, and, if necessary, tools for subfloor repair.

Complete installation instructions can be found at:

https://www.mosaictileco.com/Catalogs/MosaicLuxuryVinyl/MLV_Installation_Instructions.pdf

2G Installation Video



Heritage and Mott
Planks and
Travertina Tiles

2G Installation Video
(Spanish version)



5G Installation Video



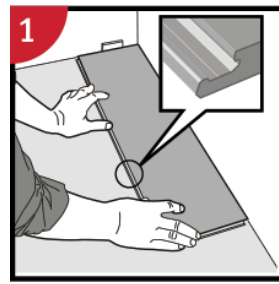
Amazon, Daroca, Docks,
Foster, and Valley Planks
Carrara, Cement,
Chenille, and Nord Tiles

5G Installation Video
(Spanish version)

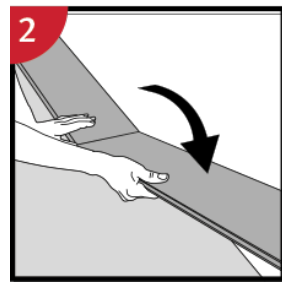


2G ANGLE CLICK METHOD

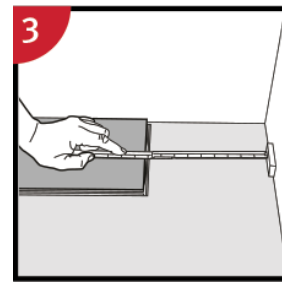
- Mott -



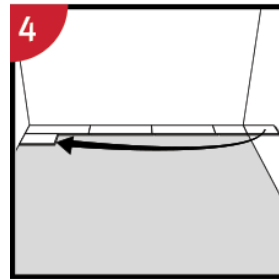
1
First plank, first row: Place a 3/8" spacer to the left and position the plank against the wall with the male side facing away from the wall. Later, after 3 rows, you can easily position the flooring against the front wall with additional spacers.



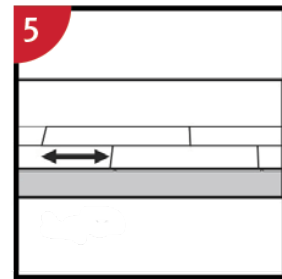
2
Second plank, first row: Press the short end of the next plank at an angle to the first one, and then fold down. Complete the first row with the same method.



3
At the end of the first row, put a spacer against the right-side wall and measure the length.



4
Second row: First plank must be 15" or greater in length. Place another spacer against the left wall.



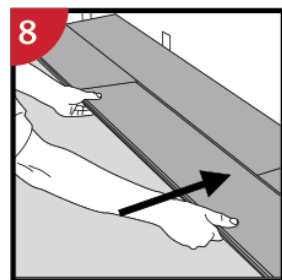
5
Stagger the distance between the joints no less than 1/3rd offset in parallel rows.



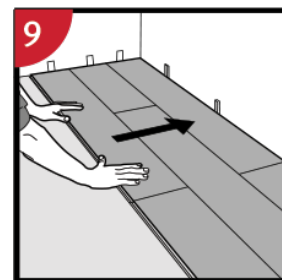
6
Place the plank at an angle against the plank in the previous row, press forward and fold down at the same time. Leave the plank in a somewhat up angled position when the planks start to lock.



7
Second plank, second row: Place the short end of the plank at an angle against the previous installed plank and fold down.

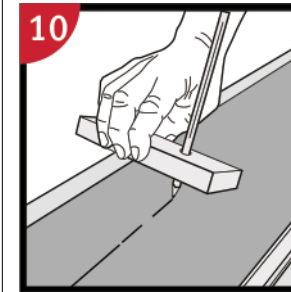


8
Push and slide the plank against the front row so it aligns with the first plank. Push it down so it engages the first plank and clicks tightly together. The first/previous plank can now be folded completely down to horizontal position.



9
After 2-3 rows: Adjust the distance to the front wall maintaining the spacer positions during the installation and remove once the installation is completed.

2G ANGLE CLICK METHOD



10
Last row (and perhaps also first row): Always keep a minimum width of 2". Place a spacer to the wall before measuring. Mark the plank along the wall. Cut the planks lengthwise including the flexible tongues and install.

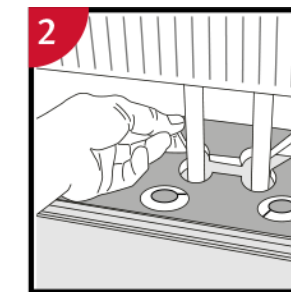
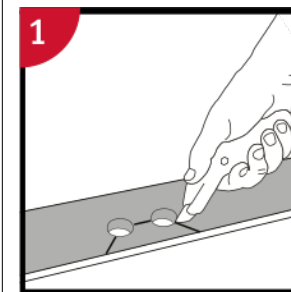
Installation Video



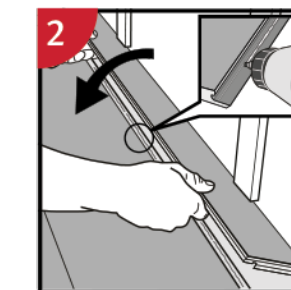
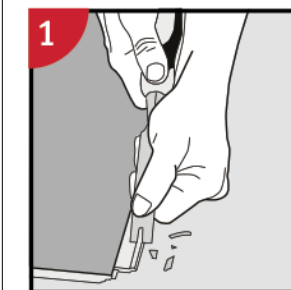
Installation Video
(Spanish version)



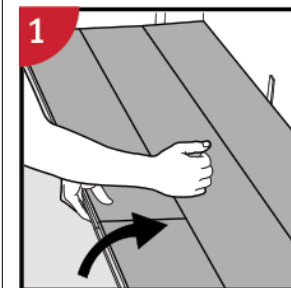
Installation around radiator/heating pipes: Drill holes two times larger than the diameter of the pipes. Remove a piece of the plank with a utility knife. Put the plank on one side of the pipes and the removed piece on the other side.



When angling is not possible: Remove the vertical locking part of the strip with a chisel, put applicable glue on the strip and push the planks horizontally together. Use spacers between last board and wall.

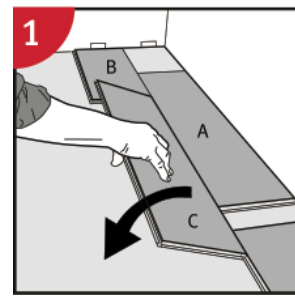


Dismantling planks: Separate the row by carefully lifting and releasing the entire row of planks. Fold up to release the complete long side. Disassemble the planks by angling the short sides up vertically.

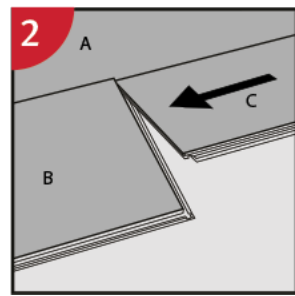


5GI DROP&CLICK® METHOD

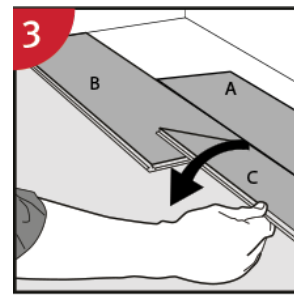
- Amazon, Carrara, Cement, Chenille, Daroca, Docks, Foster, Nord, Travertina, Valley -



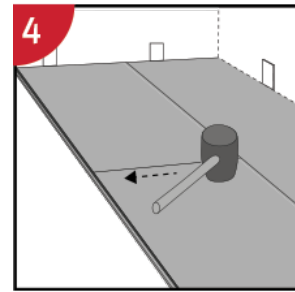
1 First row: Place plank (A) as support for long side alignment of plank (B) and (C) while you install plank (B) and plank (C). Be sure to use a 3/8" spacer along the left wall when installing plank (B).



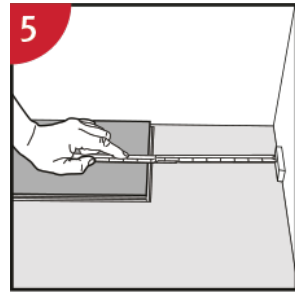
2 Second plank, first row: Place plank (C) close to the short end of the first plank (B).



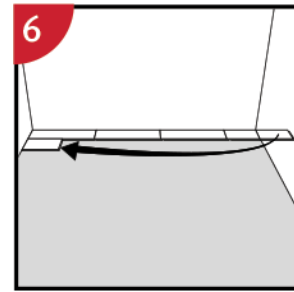
3 Engage the long side of the plank first in a single movement. Make sure the short side of the planks are close to each other. Then tap along the long side of the plank to ensure it is completely flat to the surface. ****Very Important****



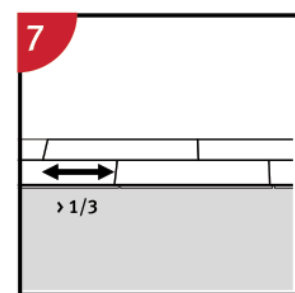
4 Use a rubber mallet along the short end and tap from the inside out as shown by the arrow above.



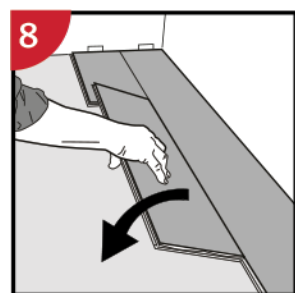
5 At the end of the first row, put a 3/8" spacer against the wall and measure the length of the last plank to fit.



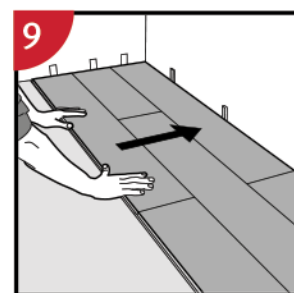
6 Second row: First plank must be 15" or greater in length. Put a spacer against the left wall.



7 Stagger the distance between the joints no less than 1/3rd offset in parallel rows.



8 Second plank, second row: Place the plank close to the short end of the previous plank and fold it down in a single action movement. Push it down so it engages the first plank and clicks tightly together. Use a rubber hammer along the short end.



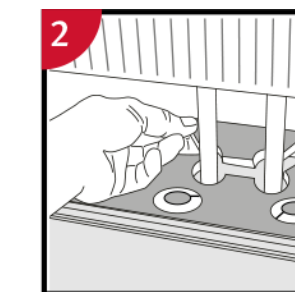
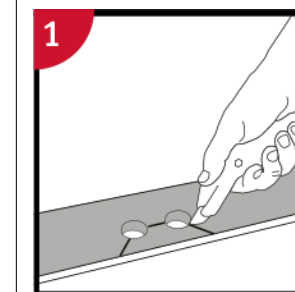
9 After 2-3 rows: Adjust the distance to the front wall maintaining the spacers positions during the installation and remove once the installation is completed.

5GI DROP&CLICK® METHOD

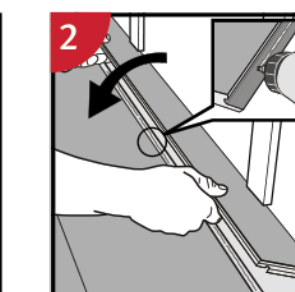
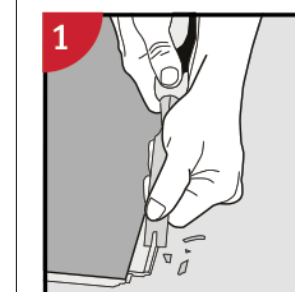


10 Last row (and perhaps also first row): Always keep a minimum width of 2". Place a spacer to the wall before measuring. Mark the plank along the wall. Cut the planks lengthwise including the flexible tongues and install.

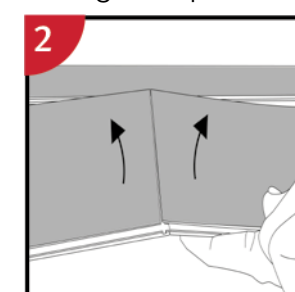
Installation around radiator/heating pipes: Drill holes two times larger than the diameter of the pipes. Remove a piece of the plank with a utility knife. Put the plank on one side of the pipes and the removed piece on the other side.



When angling is not possible: Remove the vertical locking part of the strip with a chisel, put applicable glue on the strip and push the planks horizontally together. Use spacers between last board and wall.



Dismantling planks: Separate the row by carefully lifting and releasing the entire row of planks. Fold up the row and release the long side. Disassemble the planks by lifting the short ends upwards. Never fold up a plank, as this will damage the profile.



Installation Video



Installation Video (Spanish version)



TRIM

Schluter Trims

- All styles are 94" long.
- Trim available in Brushed Chrome, Brushed Nickel, and Antique Bronze.
- QuickSHIP: Step, T, and U in Brushed Nickel. All others are Special Order and ship within 3-5 business days.

 <p>VINPRO-S Resilient surfaces edge protection profile</p>	 <p>VINPRO-T Resilient floor covering profile for retrofit applications</p>	 <p>VINPRO-U Resilient transition profile for reducing to lower elevations</p>
 <p>VINPRO-RO Resilient surface edge profile with rounded reveal for stairs and outside wall corners</p>	 <p>VINPRO-STEP Resilient floor covering finishing and edge profile for stairs</p>	

Color Coordinated Moldings – Stair Nose, SlimTrim, and Quarter Round

- All styles are 94" long.
- The use of a polyurethane adhesive such as Gorilla Original Polyurethane Glue or Liquid Nails Polyurethane Construction Adhesive is recommended to hold trim in place where nails are not appropriate.

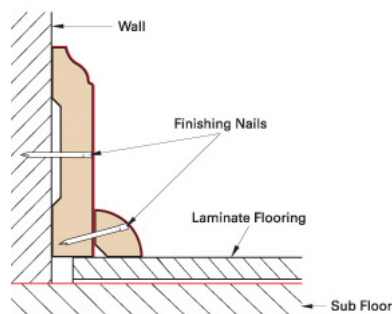
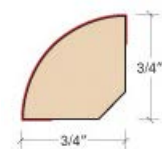


Quarter Round

Conceals the required expansion space between the wall and the laminate flooring.

Surface Material: Decorative paper
Core Material: Moisture resistant exterior grade composite wood product

Special Order with approximate two week lead time.



TRIM

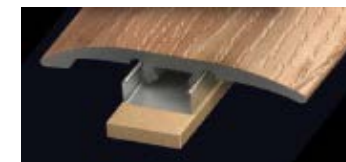
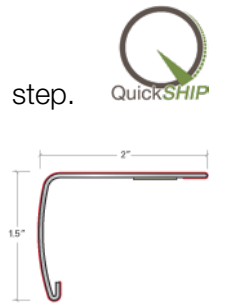


VersaEdge Extra Tall Stair Nose

Combines style and function to enhance the beauty of a staircase or step. For use on flooring with an overall thickness of up to 3/4" (19mm).

Surface Material: High wear resistance aluminum oxide laminate
Core Material: Aluminum

QuickSHIP: All 7x48 and 9x60 Luxury Vinyl Planks



SlimTrim

This 3-in-1 molding functions as a Reducer, T-Molding, and End Cap.

Surface Material: High wear resistance aluminum oxide laminate
Core Material: PVC

QuickSHIP: All 7x48 and 9x60 Luxury Vinyl Planks



SlimTrim Dowel Tree

Dowels are an optional attachment system for SlimTrim moldings and will work for flooring up to 19mm thick. It comes as a tree of eight dowels (typically enough to install one 94" SlimTrim).

QuickSHIP: All 7x48 and 9x60 Luxury Vinyl Planks



Versatrack Shim

Shims are used with SlimTrack for SlimTrim on 3-9.5mm floors, and SlimCap on 5-12.7mm floors. Shims are 94" long.

QuickSHIP: All 7x48 and 9x60 Luxury Vinyl Planks



6mil Underlayment Moisture Barricade 12'x25' (300 sf) roll:

- Limited Lifetime Warranty
- Provides the NWFA required moisture barrier over cement slabs
- Can be used with SPC flooring
- Features an adhesive strip to lockout moisture
- Use with standard foam underlayment for added moisture protection



CARE & MAINTENANCE

After installation, be sure to sweep up all trash and remove debris. Keep the floor covered with heavy paper or cardboard if there is to be additional construction work in the space. Keep leftover material and store it in a climate-controlled space for future needs.

The feet of furniture must always be covered with floor protectors made of non-staining felt or non-pigmented hard plastic. Chairs, sofas, or other furniture with castors must be fitted with soft rubber wheels and have an adequate protective mat or protective castor cups.

When moving furniture take caution and properly protect flooring to avoid scratches.

Sweep and/or vacuum the floor on a regular basis. Never use polishes, waxes, harsh chemicals or abrasive cleaners on Mosaic Luxury Vinyl.

Dry mop floor using a microfiber mop pad or appropriate floor vacuum to remove dust particulate from the floor.

Spray a neutral pH cleaner, such as Aqua Mix AquaKleen onto the floor in manageable areas as it may dry quickly. Use a microfiber mop or towel to clean the floor. Replace with a clean mop head or towel as needed to avoid spreading dirt around. Continue to clean floor in sections as necessary.

As needed, rinse the floor with water only to remove any residual cleaner from the floor.

Avoid direct sunlight exposure for prolonged periods of time as this may result in discoloration. Close blinds during peak sunlight hours as excessive heat and light will subject the flooring to fading.

Any questions? Please reach out directly to your local Mosaic Sales Representative.



Alexandria, VA | Chantilly, VA | Fairfax, VA | Richmond, VA | Virginia Beach, VA
North Bethesda, MD* | Owings Mills, MD* | Greensboro, NC | Raleigh, NC

www.mosaictileco.com



Noted (*) locations are 100% wind powered! All locations support renewable power sources.

