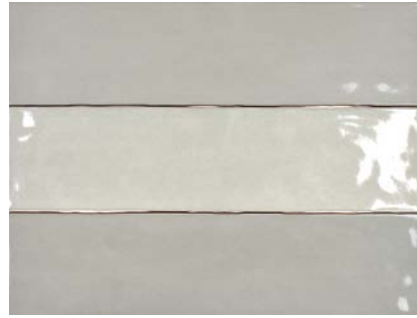


# Bar Tile

3x12 Ceramic Wall



88BARNUU312G



88BAROSL312G



88BARHAV312G



88BARGLA312G



*QuickSHIP*

Wall Tile: 3x12

Wall Trim: N/A

For more information  
and images:



## Technical Characteristics

Test Item	Test Method	Test Result
Water Absorption	ASTM C373	≤ 20%
Breaking Strength	ASTM C648	<b>Not Applicable</b>
Scratch Hardness	MOH's	<b>Not Applicable</b>
Chemical Resistance	ASTM C650	<b>Unaffected</b>
Warpage	ASTM C485	<b>Pass</b>
Wedging	ASTM C502	<b>Pass</b>
Recycled Content	--	<b>25%</b>

Nominal Size	Actual Size	Thickness	Finish
3" x 12" Wall	3.03" x 12.01"	7.3 mm	Glossy



For your convenience, these products are stocked in our Central Service Center.