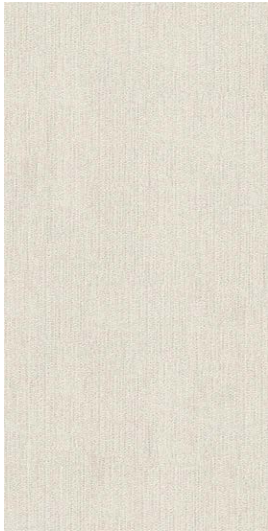


# Fray X

12x24 Color Body Porcelain



15FRXMOO1224



15FRXFOG1224



15FRXMIS1224



15FRXALM1224



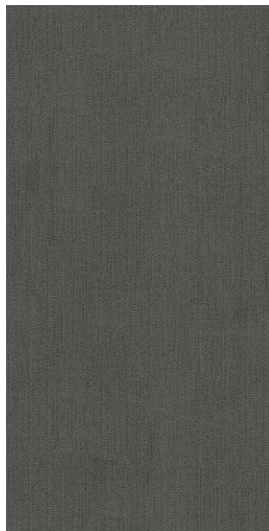
2x2 Mosaic



Outline Mosaic



15FRXCLA1224



15FRXGRA1224



15FRXMIS1224T  
Mist Trama Wall



15FRXALM1224T  
Almond Trama Wall



- Tile: 12x24 - 24x24 - 24x48
- Wall Tile: 12x24 Trama
- Mosaics: 2x2 - Outline
- Trim: 3x24 Bullnose - 6x12 Cove Base
- Outdoor: 20mm 24x24 (ALM only)

For more information  
and images:





## Technical Characteristics

Characteristic	Test Method	Porcelain Tile Specification		Value
		Calibrated	Rectified	
Nominal Size	ASTM C499	± 3%	- 3% or + 2%	Compliant
Caliber Range		± 0.5% or ± 0.08 in	± 0.25% or ± 0.03 in	Compliant
Thickness		Range: 0.04 in		Compliant
Wedging	ASTM C502	± 0.5% or ± 0.08 in	± 0.25% or ± 0.03 in	Compliant
Warpage Edge	ASTM C485	± 0.75% or ± 0.09 in	± 0.40% or ± 0.05 in	Compliant
Warpage Diagonal		± 0.5% or ± 0.08 in	± 0.40% or ± 0.07 in	Compliant
Water Absorption	ASTM C373	≤ 0.5%		≤ 0.5%

Characteristic	Test Method	Matte	Outdoor Sensitech	Matte	Outdoor Sensitech
		Average ≥ 250 lbf Individual ≥ 225 lbf	≥ 2000 lbf	≥ 350 lbf	≥ 2000 lbf
Modulus of Rupture	ASTM C1050	Outdoor Sensitech 5000 psi.		Outdoor Sensitech Compliant	
Mohs' Scratch Hardness	C1895	Subject to the project		MOHS 7-8: Hard Suitable for high-traffic residential and light commercial areas	
Bond Strength	ASTM C482	≥ 50 psi		≥ 100 psi.	
Resistance to Freeze/ Thaw Cycling	ASTM C1026	As Reported		Resistant	
Thermal Shock Resistance	ASTM C484	As Reported		Resistant	
Chemical Resistance	ASTM C650	As Reported		Unaffected	
Stain Resistance	ASTM C1378	As Reported		Unaffected	
DCOF	ANSI A326.3	Subject to the project		Matte ≥ 0.42	Outdoor Sensitech ≥ 0.60

Nominal Size	Actual Size	Thickness	Finish	Rectified
12" x 24"	11.75" x 23.62"	9 mm	Matte	Yes
12" x 24" Trama Wall	11.75" x 23.62"	9 mm	Matte	Yes
24" x 24"	23.62" x 23.62"	9 mm	Matte	Yes
24" x 24" Outdoor	23.62" x 23.62"	20 mm	Outdoor Sensitech	Yes
24" x 48"	23.62" x 47.25"	9 mm	Matte	Yes
2" x 2" Mosaic	11.75" x 11.75"	9 mm	Matte	-
Outline Mosaic	11.22" x 13.75"	9 mm	Matte	-
3" x 24" Bullnose	2.87" x 23.62"	9 mm	Matte	-
6" x 12" Cove Base	5.87" x 11.75"	8.5 mm	Matte	-

All tile is subject to variations in technical specifications and performance due to the inherent variables in the raw materials and production process. It is understood that test results on a particular product may vary slightly from tile to tile and from test to test. Test results are not guarantees of minimum or maximum thresholds of performance.